



# The Turning Point

In this issue:

Presidents Message	2
Free to a good home	4
Meeting Notes	5
Guest Show-n-Tell	8
Show-n-Tell	9
Calendar	11
Raffle Booth	11
Executive	12



Member since 2012

*The next meeting of the Nova Woodturners' Guild is  
At Lee Valley Tools, 150 Susie Lake Crescent, Halifax  
**SUNDAY**, March 19, 2023. 1:00 p.m.*

*The next meeting will feature  
**David McLachlan:**  
Photographing your work  
and a Tool Sale*

## The President's Workshop March 2023

Gary Landry

Well this is the month we slide into a new Spring. Fingers crossed that we don't get any unwelcome surprises!

Unfortunately, I have to report the passing of one of our past members. **Henderson Allen** passed away at the end of February at the age of 98. He led a well lived life according to his obituary [Obituary of Henderson Spurgeon Allen | T.J. Tracey Cremation & Buri... \(tjtracey.com\)](#) and faithfully attended our monthly meetings up to the COVID lockdown. He was obviously not able to return to our in-person meetings before he passed. I have posted a message of condolence to his obit page on behalf of the members of the Guild.

We had over 25 members in attendance and at least three visitors at our Feb 19<sup>th</sup> meeting. That is in line with our pre-pandemic attendance levels. Well done folks!!! Let's keep that up.

Last month's demo by **Steve Zwerling** went well. We had so many questions for Steve that we actually made it last for an hour and a half. Thank you Steven.

The fun turn had five entrants. They described their entries and the processes used to make them (warts and all!). Two entrants won a \$20 gift card for Lee Valley provided by the Guild. We had a Show and Tell session and Norm conducted a successful raffle. See the details in the following Newsletter.

Also, I must report on our first ever (to me anyway!) online auction. We were donated a LaserPecker2 Pro by **Steve Gutz** (of "**Steve Makes Everything**" on YouTube). Thank you Steve! It has a retail value of over \$1600 and I am pleased to announce that member **Darren Eisan** won the auction with a bid of \$750. Darren has taken possession of the laser and is in the process of familiarization now. We have learned a lot during this auction and, should we do it again, we will be able to make it an easier and more efficient endeavour. The funds received will go to the operational expenses of the Guild.

Our demo this month will be presented by **Dave McLachlan** at our meeting on Sunday, March 19<sup>th</sup> at 1:00PM. The Executive is in the throes of arranging for an IRD for our meeting either in April or in May. We still could use one more demo from one of our members. Please let us know if you will help us out by making a presentation at one of our meetings. As we do not have WiFi available to us at Lee Valley this may

end up being a Zoom type demo that you can watch from your residences.

And speaking of WiFi, the Executive are exploring a device (available at some libraries outside HRM) that may allow us to transmit our meetings to stay-at-home members in real time. We are investigating this because we did not have any members with unlimited data plans come forward to allow us to set up a mobile hot spot at **Lee Valley** using their cell phones. So this may be our way forward to hold what is referred to as a “hybrid meeting” where we could do the same thing. Details to follow.

The Guild has committed to a week of demos and (potentially) sales at **Scott Manor House** in Bedford in August this summer. **Bill Maes** is coordinating things and will be sending out the particulars to all members. Essentially, we will be able to expose the general public to both wood turning in general and our Guild in particular for several hours each day of our tenure. Please volunteer a few hours of your time. Sales of turned items can be made to the public on these days by both the demonstrators and on behalf of other Guild members who cannot attend. The cost to sellers will be 10% of the price, donated to Scott Manor House. At the very least, the Guild will probably be selling leftovers from the Christmas craft sale we attended in 2022.

Speaking of the craft sale, we need to think if we want to continue to participate in this type of activity to raise operational funds for the Guild. If this is an activity that is of interest to the membership we need to start earlier than we did last year and have members thinking of making a donation every time their lathes are put to use through the summer and early fall. In that way there is no last minute rush by the Executive to beg for donations and members can produce donations at a leisurely and more thoughtful pace.

Well that is all I can think of right now but, as is usual with me, I'll probably think of something I missed as soon as this is published.

Keep turning, stay safe and promote wood turning to people you meet.

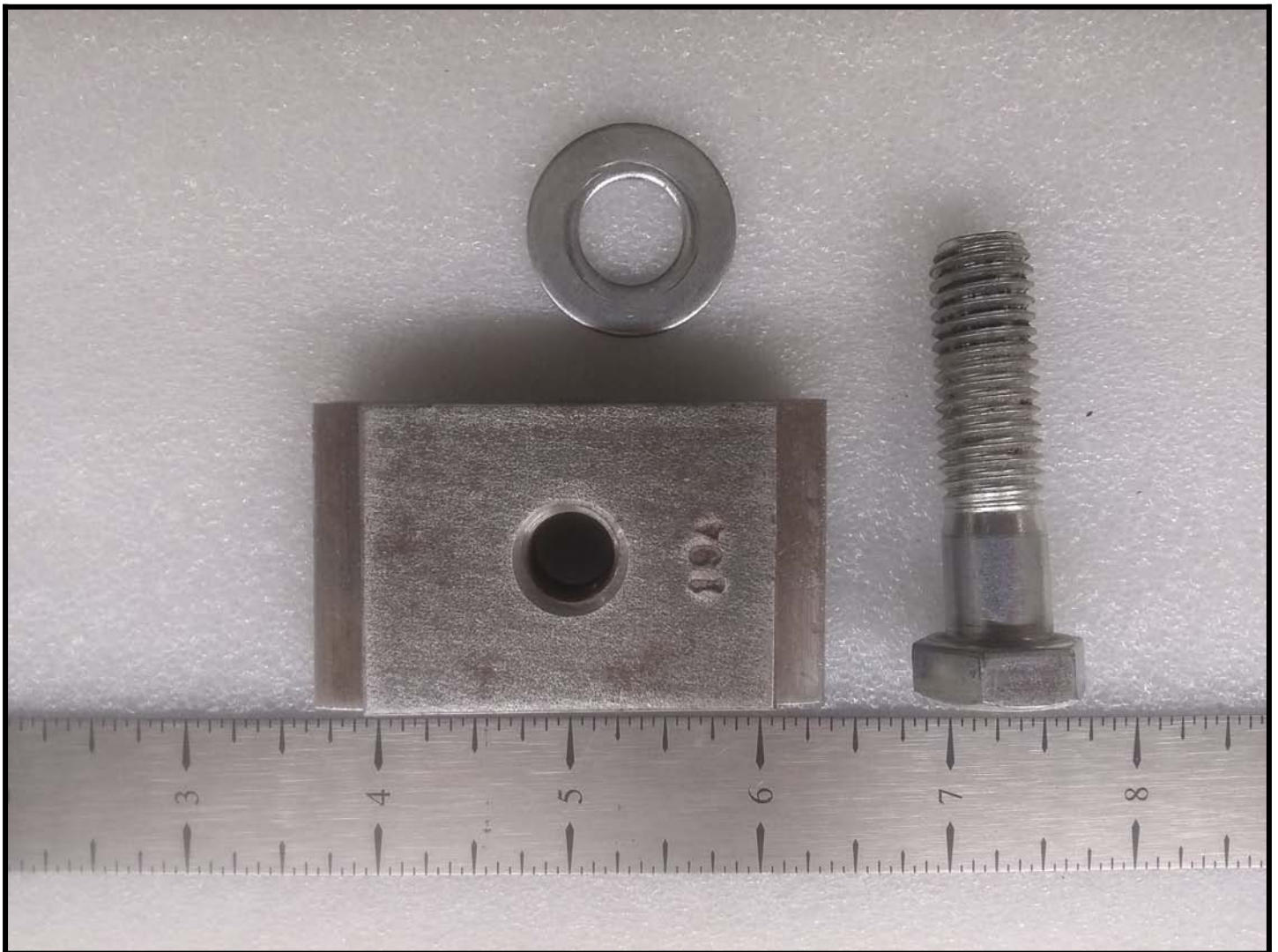
**Gary Landry** – President

## Free to a Good Home

Up for offer:

- One steel lathe bed clamp block (see photo). This fits between the ways of the lathe bed and is used to clamp accessories to the lathe bed. This block fits a lathe bed with a two inch space between the ways.

Contact **Calum Ewing** at [calumewing@eastlink.ca](mailto:calumewing@eastlink.ca) or 902-221-6471 if you would like to provide the proper care and feeding of this accessory.



## Meeting Notes February 19, 2023

Calum Ewing

Meeting held in the Seminar Room, Lee Valley, Halifax

President **Gary Landry** called the annual Christmas social gathering to order at 1:05pm with 25 members and 2 guests present.

### **Announcements:**

- **Gary Landry** provided an update on the auction for the Laserpecker II Pro engraver. There were several people (both members and non-members) bidding and the winning bid was \$750. Congratulations to the winning bidder!
- VP **Bill Maes** updated the meeting on a potential display and sale at Scott Manor House museum in Bedford. The museum is still keen for the Guild to display and demo works for a week this summer with sales of work to museum visitors encouraged

### **Main Presentation:** *'Considerations Raised by the Wood and Matters of Technique and Process.'* with Life Member, **Stephen Zwerling**.

Stephen presented a facilitated discussion of matters relating to techniques and process as well as special considerations for dealing with specific types of wood. Stephen started out in turning making props needed for his photography work and in theater situations. He has now been turning professionally for several years.

It was a wide-ranging discussion with many contributors. Some of the main points included:

- When preparing and working with burls:
  - it is often easier working with burl wood as there is no clear defined grain direction
  - that said, it is always important to be cutting well:
    - using sharp tools
    - using the correct tool for the task
    - having correct grind angles for the type of cut needed
    - presenting the tool well
  - often burl wood is as dense as the parent wood species, in behavior it is not too different from the regular straight-grained wood
  - when working through transitions from burl figure to straight-grain areas, you do have to keep in mind that the straight-grain areas will present grain direction issues that the burl areas will not.

- Working with feathered (crotch) grain:
  - the highly desired feathered grain tends to be concentrated near the pith, just below the bifurcation point
  - if the wood is split down the pith, you need to be careful not to turn away the best grain pattern
  
- Drying green wood
  - in the Maritimes, green wood dries at a rate of about 1 year per inch of thickness down to a desired 14% moisture
  - it can take several years for 4 inch stock to dry down for turning
  - you can dry wood faster using a kiln, but they are expensive to run
  
- Open-grained woods (eg. Oak, Ash)
  - The early and late season woods have very different densities
  - You can easily sand the softer light wood away more than the more dense wood creating rippled surfaces
  - you need to cut these woods well so you can minimize the sanding required
  - you can't fix a rippled or undulated surface with more sanding
  - you need to get all the dust out of the open pores before finishing. Compressed air is good for this
  - you can also use a sanding sealer – it fills the pores to create an even surface and then lightly sand the piece
  
- Finishing:
  - Stephen usually uses only:
    - Tried & True™ finish – a mixture of beeswax and boiled Linseed oil
    - Shell-a-Wax™ - for a harder, glossier finish, but only on items not meant to be handled much as it does not stand up well to a lot of handling
  
- Gluing Waste Blocks:
  - on exotic and oily woods (eg. Teak, white oak, rosewood, etc.) use G2 Epoxy. Other glues will not hold effectively
  - on other woods, use high temperature hot-melt glue, then cut the glue off rather than trying to heat it off.



- Spindle work:
  - as the spindle components get thinner, tensions change and the wood can move
  - can often get oscillations or vibrations of the spindle due to the wood shifting
  - need to be careful not to put too much pressure on the tail stock or you will cause the spindle to bend resulting in rough cuts
  - similarly, take only light cuts as the spindle gets thinner to avoid deflecting the spindle as you are cutting, resulting in a poor surface (rough or spiraled)
  - you can use one hand to steady the work while you cut with the other hand
  - it is good practice to create accurate measured drawings first so you know the exact dimensions desired once turning – especially if you need to create multiple identical pieces.

### **Show & Tell:**

- Lowell Jenkins** showed off several vases and a small live-edge bowl all turned in Staghorn Sumac. One was still in progress and has a small Kölsch beer glass (*Lee Valley # 50K1101*) inserted to provide a waterproof vase for flowers
- xxxxx xxxxx** showed off a large charcuterie board with a glass cloche in the centre. He prefers to turn large pieces and has two VB-36 lathes and a Krayler lathe
- Stephen Zwerling** presented a small sphere turned in cherry burl without using templates, a small bowl in cherry burl with a round (footless) bottom. This allows the bowl to rock and find its own resting position giving it a sense of liveliness.

### **Fun Turn Results:**

The 'rules' for the 2023 Fun Turn were to create any turning from a blank of dimensions 8 x 4 x 2 inches with at least one component turned in spindle orientation and one component turned in faceplate orientation.

- Gary Landry** turned a small 'mushroom' box in poplar
- Mark Hazen** submitted a pair of candle sticks in oak
- Bill Maes** turned a small coffee scoop in an unknown African hardwood
- Calum Ewing** turned three multi-axis bud vases in roasted birch
- Dianne Looker** presented a small bowl and spinning top along with a pendant and ear rings decorated with acrylic paints

Two prizes were awarded to participants by random draw:

\$20 Lee Valley gift cards went to **Bill Maes** and **Gary Landry**.

Meeting wrapped up at 3:20pm

Guest Speakers Show and Tell

Chris Palmers' photos



**Stephen Zwerling** not only provided a thoughtful insight into wood and the turning process but also graced us with a couple of examples of his work, including his wooden eyeball!





Show and Tell

Chris Palmers' photos





Show and Tell

Chris Palmers' photos



## Calendar of Events

Date	Subject	Location
September 18, 2022	Registration Meet-n'-Greet / Various Developments	Lee Valley Tools
October 16, 2022	Dave McLachlan Sanding Tools	Lee Valley Tools
November 20, 2022	Richard Ford "Not Jimmy's Platter"	Lee Valley Tools
December 11, 2022	Xmas Social Food, Talking and stuff	Lee Valley Tools
January 15, 2023	Meeting Cancelled due Winter Storm	Lee Valley Tools
February 19, 2023	Stephen Zwerling Considerations Raised by the Wood and Matters of Technique and Process.	Lee Valley Tools
March 19, 2023	David McLachlan Photographing your work and a Tool Sale	Lee Valley Tools
April 16, 2023		Lee Valley Tools
May 7, 2023		Lee Valley Tools
June 11, 2023	Awards Night and AGM	Lee Valley Tools

(Third Sunday of the month, 1:00 pm.)

### The Raffle Booth

Norm Jolivet / Yogi Gutz

#### Raffle Results:

**Lowell Jenkins**

The winner of the auction? -**Darren Eisan**

took home a blank in torrified curly maple

**Yogi Gutz**

took away a Veritas™ grinder tool rest

**Ken Riles**

won a turning blank in oak

**Martin Lachance**

took home a large blank in white pine

**John Ashton**

won a grinder set up



## Nova Woodturners' Guild – 2022/23 Executive

*Our e-mail now reflects a more consistent method of communicating with the various offices in the Nova Woodturners' Guild. The recipients will change as the need arises but a note sent to the president will go to who ever is president at that time. All the following <address> should be followed by @novawoodturnersguild.com to send mail to that person*

<address>@novawoodturnersguild.com

<b>Position</b>	<address>		
<b>Executive</b>	executive (sends the message to all executive positions on the list)		
<b>President</b>	president	(or) pres	Gary Landry
<b>Vice President</b>	vice-president	(or) vp	Bill Maes
<b>Secretary</b>	secretary		Calum Ewing
<b>Treasurer</b>	treasurer		Dave McLachlan
<b>Director at Large</b>	director-at-large		Brian Sharp

### Committees

<b>Library</b>	library	Jim Diamond Richard Ford	<b>C</b>	
<b>Web Site</b>	webmaster	Richard Ford	<b>C</b>	
<b>Membership &amp; Promotion</b>	membership	<b>Vacant</b>	<b>C</b>	
<b>Newsletter</b>	newsletter	(or) news	Norm Jolivet	<b>C</b>
<b>Competition</b>	competition	<b>Vacant</b>	<b>C</b>	
<b>Guild Photographer</b>	photographer	(or) photos	Chris Palmer	
<b>Fund Raising</b>	Raffles	Norm Jolivet Yogi Gutz	<b>C</b>	
<b>Nominating</b>	nominations	Bill Maes	<b>C</b>	
<b>Members Group</b>	members	30+ members		

To add or remove yourself from the group email: [webmaster@novawoodturnersguild.com](mailto:webmaster@novawoodturnersguild.com)

Note: to email all NWG members you must go via the club secretary.