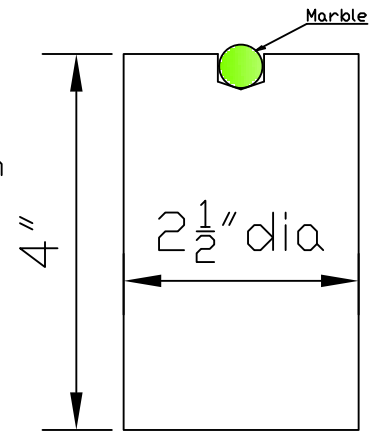


Top

Start with A $2\frac{1}{2}$ " to 3" square block of hard wood about 4" Long

Turn it round and square the ends. Drill a hole in the center of one end $\frac{1}{32}$ " larger than the marble. Drill the depth so the marble center is just below end of block.

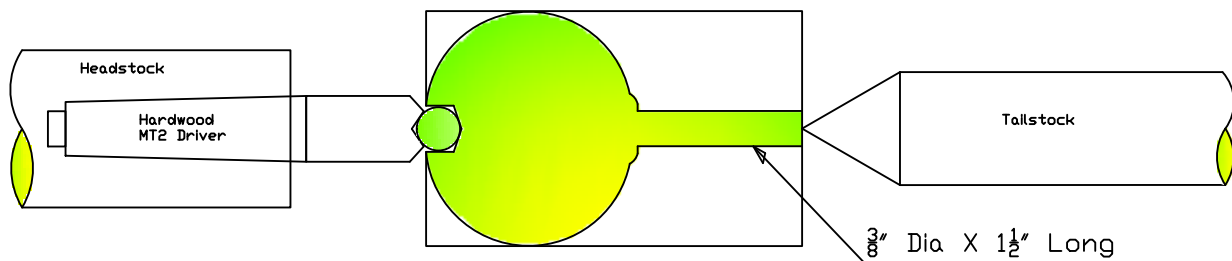
Next glue the marble in the hole with some 2 part epoxy and let set.



Next mount the Hardwood MT2 Driver in the headstock and turn a V to fit the marble this will ensure the marble runs true. Bring up the tailstock with a live center and tighten.



Now turn your Top Decorate and finish to your own taste. The $\frac{3}{8}$ " shaft should be long enough to pass through the Handel.



Next carefully drill a $\frac{1}{8}$ " hole $\frac{3}{4}$ " from the shoulder for the String.

