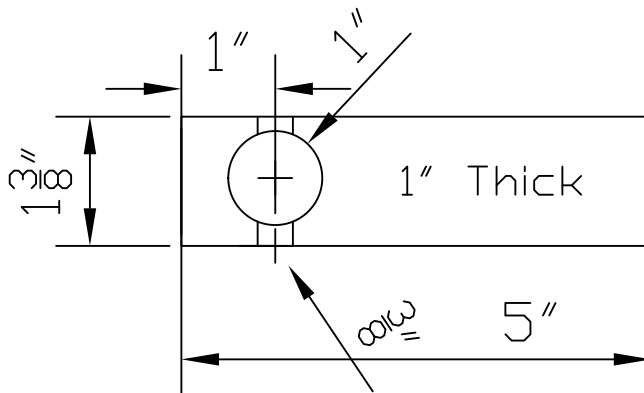


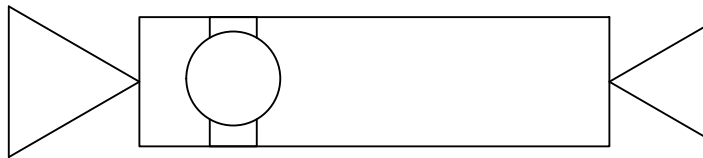
Handle

Start with A 1" X 1 $\frac{3}{8}$ " X 5" Block of hard wood
 Drill 2 holes 1" from one end in the center of each side.
 A 1" hole in the 1 $\frac{3}{8}$ " side and a $\frac{3}{8}$ " in the 1" side

To avoid tear-out first drill through with a $\frac{1}{8}$ " then finish with a forsnor bit or similar drilling half way through from each side



Next mark the center point in each end and and mount between centers.



Turn a pleasing handle shape and decorate To your taste.

